

High Street, Wanstead



Caerus Developments and N.Family Club are pleased to confirm that an application has been submitted for the redevelopment of 28-30 High Street, Wanstead.

The proposals comprise 24 new homes (35% affordable housing) above ground floor nursery. The nursery will be occupied by N Family Club (targeting Ofsted Outstanding) delivering approximately 40 full time jobs.

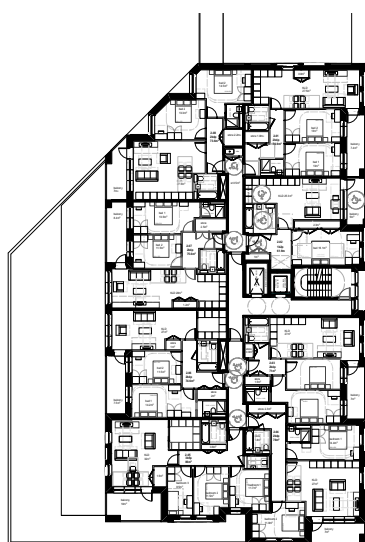




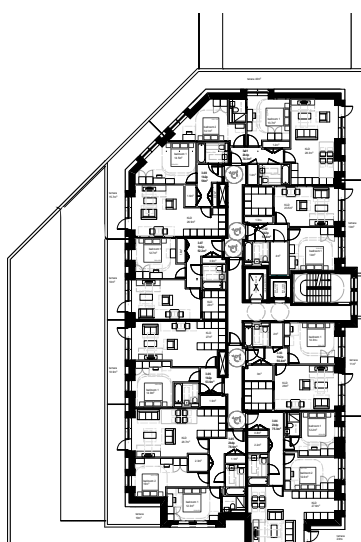
- Key**
- A. Ecology pond
 - B. Lawn
 - C. Wildflower planting
 - D. Playspace + equipment
 - E. Native species hedging

Mature trees will be retained and following public consultation last year, 50% of the site will be laid out as an ecology-led public open space, including a pond, nature trail and 14 new trees. Positive discussions are ongoing with the London Borough of Redbridge to transfer the Freehold of this space to them for £1, upon completion of works.

The development will be car-free, in line with planning policy, save for disabled parking and electrical charging point. Storage for 67 bicycles will be provided, along with sustainable features such as photovoltaic cells (PV), a green roof and a sustainable urban drainage system (SUDS).



First and second floor



Third floor

Floor	One beds	Two beds	Three beds
Ground	Nursery & servicing		
First	2	4	2
Second	2	4	2
Third	5	3	-
TOTAL	9	11	4